

TOEIC® Listening and Reading Test Updates LOCAL PRESS RELEASE COPY

Contact: Center for Professional Assessment (Thailand)
Phone: +66 2 260 7061, +66 2 259 3990
EMAIL: CPA@cpathailand.co.th

Thailand to Receive TOEIC® Listening and Reading Test Updates

Updates to reflect changing use of English in the workplace; but with no change to score scale, test difficulty, number of items or test length

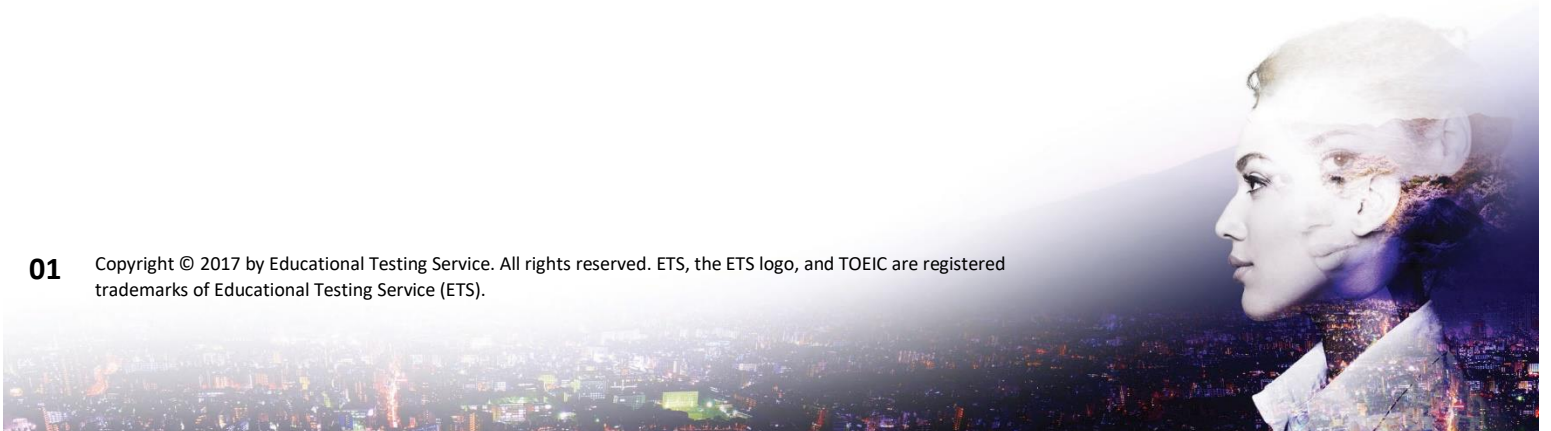
Bangkok (October 28th, 2019) — Educational Testing Service (ETS), the creator of the TOEIC® Program, announced updates to the format of questions used in the TOEIC® Listening and Reading test. The changes will take effect in Thailand beginning with the January 1st, 2020 test administrations. The TOEIC Program in Thailand is managed by the local ETS Preferred Network member Center for Professional Assessment (Thailand).

Background

The TOEIC test was first launched in 1979 to measure English-language proficiency in the global workplace. The test was last revised in 2006. The updated question formats will reflect the changing use of English and the ways in which individuals commonly communicate in everyday social and work situations around the world.

“As the use of English evolves and changes, so must the TOEIC tests and test questions,” said Dr. Feng Yu, Executive Director of the TOEIC Program at ETS. “To ensure that the TOEIC test reflects current language use and measures the language skills that individuals need, ETS has updated sections of the TOEIC Listening and Reading test.”

Although some of the question formats within the test will change, ETS has conducted several studies to verify there will be no change in the meaning for the TOEIC Listening and Reading test scores before and after the updates. There also will be no change to the level of test difficulty or total testing time. The updated test questions first appeared in TOEIC public test administrations held in Japan and Korea on May 29, 2016. Following the successful launch in Japan and Korea, the updated test questions will appear in TOEIC® Listening and Reading test administrations held in Thailand beginning January 1st, 2020.



Impact of the Updates

With these updates, the overall quality and difficulty of the TOEIC Listening and Reading test will remain the same and as such the TOEIC test will continue to be a fair, valid and reliable assessment of everyday and workplace English. There will be no changes in the administration of the test. The score report will remain unchanged with the exception of one additional Listening Ability Measured: Understanding a speaker's purpose or implied meaning in a phrase or sentence. This provides additional information for test takers and score users. The addition of the new Listening Ability Measured does not affect a test taker's overall score. Scores will continue to be comparable across test administrations.

Benefits to Test Takers and Score Users

By taking the updated version of the TOEIC Listening and Reading test, individuals can demonstrate that they have the relevant English communication skills needed in today's global workplace. In return, organizations can be confident they are using a test that measures a range of skills relevant and necessary for success in global workplace communications.

For more information on the TOEIC Listening and Reading test, including updated sample questions, visit <https://www.ets.org/toEIC>.

Additional details of the updates are outlined in Attachment 1.



Attachment 1

Summary of the TOEIC Listening and Reading Test Updates

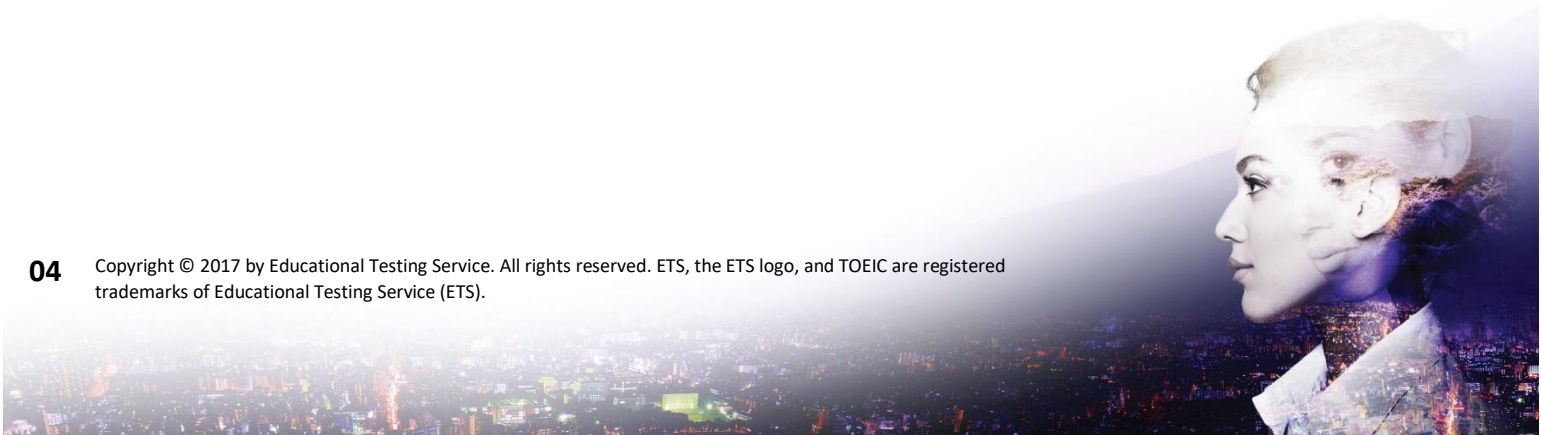
The TOEIC Program is introducing updates to the Listening and Reading test. In order to present a comparison between the current and updated versions of the test, ETS has provided the following summary of the changes.

Listening Section

- A reduced number of Photograph and Question Response questions
- An increased number of Conversation questions
- Conversations that include shorter turns and more exchanges
- More than two speakers in some conversations
- Conversations that include elisions (going to → gonna) and incomplete sentences/fragments (Yes, in a minute; Down the hall; Could you?)
- New question types testing the connection of what is heard in a conversation or talk and what is seen in a graphic
- New question types testing a speaker's implied meaning in the context of a conversation or talk



| | | Current Version of the TOEIC® Listening and Reading Test | Updated Version of the TOEIC® Listening and Reading Test |
|----------------|----------------------------------|---|---|
| Part 1: | Stand-Alone Questions | Photographs: 10 Questions | Photographs: 6 Questions |
| Part 2: | Stand-Alone Questions | Question-Response: 30 questions | Question-Response: 25 questions |
| Part 3: | Set-Based Questions | Conversations: 30 questions <ul style="list-style-type: none"> • 10 conversations • 3 questions per conversation | Conversations: 39 questions <ul style="list-style-type: none"> • 13 conversations • 3 questions per conversation |
| Part 4: | Set-Based Questions | Talks: 30 questions <ul style="list-style-type: none"> • 10 talks • 3 questions per talk | Talks: 30 questions <ul style="list-style-type: none"> • 10 talks • 3 questions per talk |
| | | Listening Comprehension: 100 questions | Listening Comprehension: 100 questions |



Reading Section

- A reduced number of Incomplete Sentence questions
- Two new question-types testing understanding of the overall organization of passages:
 - Text completion questions that ask test takers to choose which new sentence fits best in the context of the overall passage
 - Set-based questions that ask test takers to understand where in the passage a sentence belongs
- Text messages, instant messages or online chat conversations with multiple writers
- Questions testing the understanding of three related texts
- A small increase in the number of single- and multiple-passage questions
- New questions about understating the writer's words in context



| | | Current Version of the TOEIC® Listening and Reading Test | Updated Version of the TOEIC® Listening and Reading Test |
|----------------|----------------------------------|--|--|
| Part 5: | Stand-Alone Questions | Incomplete Sentences: 40 questions | Incomplete Sentences: 30 questions |
| Part 6: | Stand-Alone Questions | Text Completion: 12 questions | Text Completion: 16 questions |
| Part 7: | Set-Based Questions | Single Passage: 28 questions <ul style="list-style-type: none"> • 9 single passages • 2–5 questions per passage | Single Passage: 29 questions <ul style="list-style-type: none"> • 10 single passages • 2–4 questions per passage |
| | Set-Based Questions | Double Passages: 20 questions <ul style="list-style-type: none"> • 4 double passages • 5 questions per set | Double Passages: 25 questions <ul style="list-style-type: none"> • 2 set-based double passages • 3 set-based triple passages • 5 questions per set |
| | | Reading Comprehension: 100 questions | Reading Comprehension: 100 questions |

